

Latitude 7480

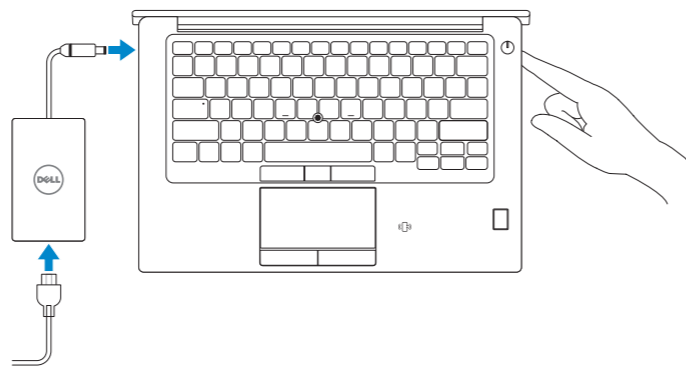
Quick Start Guide

Guia de consulta rápida



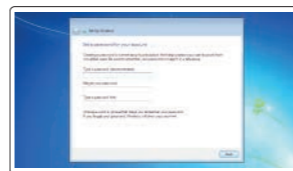
1 Connect the power adapter and press the power button

Conecte o adaptador de energia e pressione o botão liga/desliga



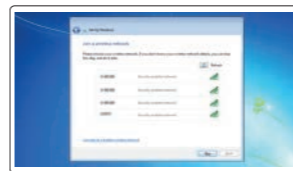
2 Finish Windows 7 setup

Conclua a configuração do Windows 7



Set a password for Windows

Defina uma senha para o Windows

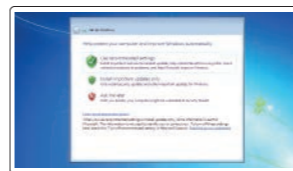


Connect to your network

Conectar-se à rede

NOTE: If you are connecting to a secured wireless network, enter the password for the wireless network access when prompted.

NOTA: ao se conectar a uma rede wireless segura, digite a senha de acesso à rede wireless quando solicitado.



Protect your computer

Proteja o seu computador

Product support and manuals

Suporte ao produto e manuais

Contact Dell

Entre em contato com a Dell

Regulatory and safety

Normas e segurança

Regulatory model

Modelo regulamentar

Regulatory type

Tipo de regulamentação

Computer model

Modelo do computador

Dell.com/support

Dell.com/support/manuals

Dell.com/support/windows

Dell.com/contactdell

Dell.com/regulatory_compliance

P73G

P73G001

Latitude 7480



0HG39FA00

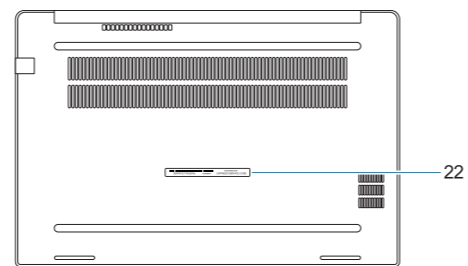
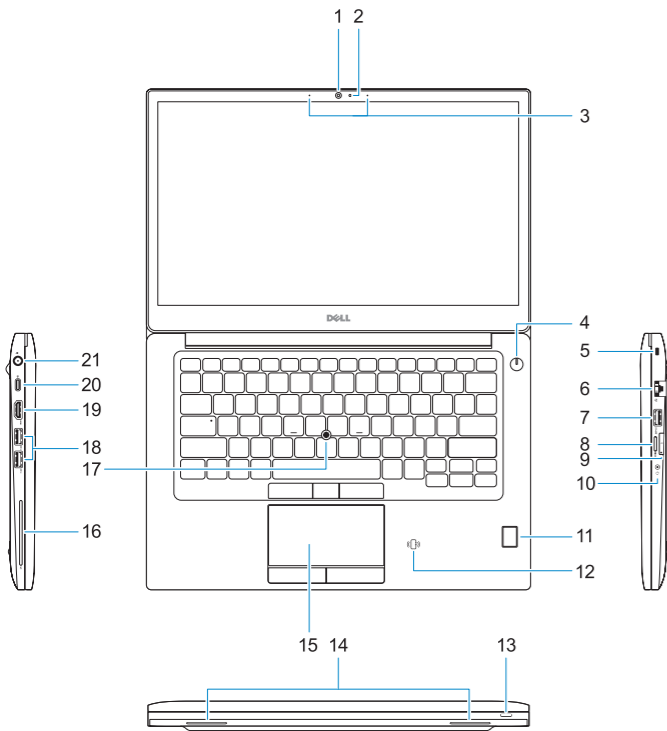
© 2017 Dell Inc. or its subsidiaries.

© 2017 Microsoft Corporation.

2017-03

Features

Recursos



1. Camera
2. Camera status light
3. Microphones
4. Power button
5. Security cable slot
6. Network port
7. USB 3.0 port with PowerShare
8. microSD port
9. USIM port
10. Headset port
11. Fingerprint reader (optional)

12. NFC sensor (optional)
13. Status light
14. Speakers
15. Touchpad
16. Smartcard reader (optional)
17. Pointstick (optional)
18. USB 3.0 ports
19. HDMI port
20. DisplayPort over USB Type-C (optional Thunderbolt™ 3)
21. Power connector port
22. Service tag label

1. Câmera
2. Luz de status da câmera
3. Microfones
4. Botão liga/desliga
5. Encaixe do cabo de segurança
6. Porta de rede
7. Porta USB 3.0 com PowerShare
8. Porta microSD
9. Porta USIM
10. Porta para headset
11. Leitor de impressão digital (opcional)
12. Sensor NFC (opcional)

13. Luz de status
14. Alto-falantes
15. Touchpad
16. Leitor de cartão inteligente (opcional)
17. Ponteiro (opcional)
18. portas USB 3.0
19. Porta HDMI
20. DisplayPort por USB Type-C (Thunderbolt™ 3 opcional)
21. Porta do conector de alimentação
22. Rótulo da etiqueta de serviço